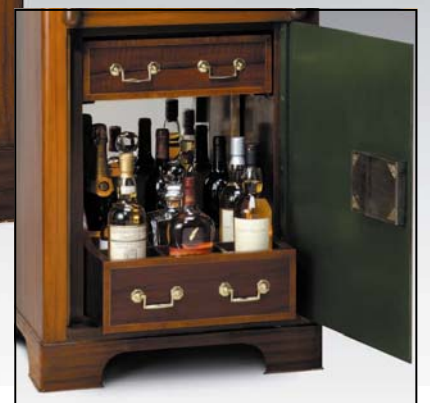




The Julius Schuler Safe

The Ace Safe Company Ltd
Unit 10D Forest Corner Farm
Hangersley
Hampshire
BH24 3JW

Tel: 0800 373 943
Email: info@acesafe.co.uk
Web: www.acesafe.co.uk





The Julius Schuler Safe

The Ace Safe Company Ltd
Unit 10D Forest Corner Farm
Hangersley
Hampshire
BH24 3JW

Tel: 0800 373 943
Email: info@acesafe.co.uk
Web: www.acesafe.co.uk

The Story

Imagine if you will the international seaport of Hamburg around the turn of the nineteenth century. The harbour throbs with life as pioneers board their vessels to explore and trade in far off lands. The dockers heave and grunt as they load the precious cargoes, toiling 'til nightfall when they head for the waterfront fleshpots to spend their sweat-soaked cash.

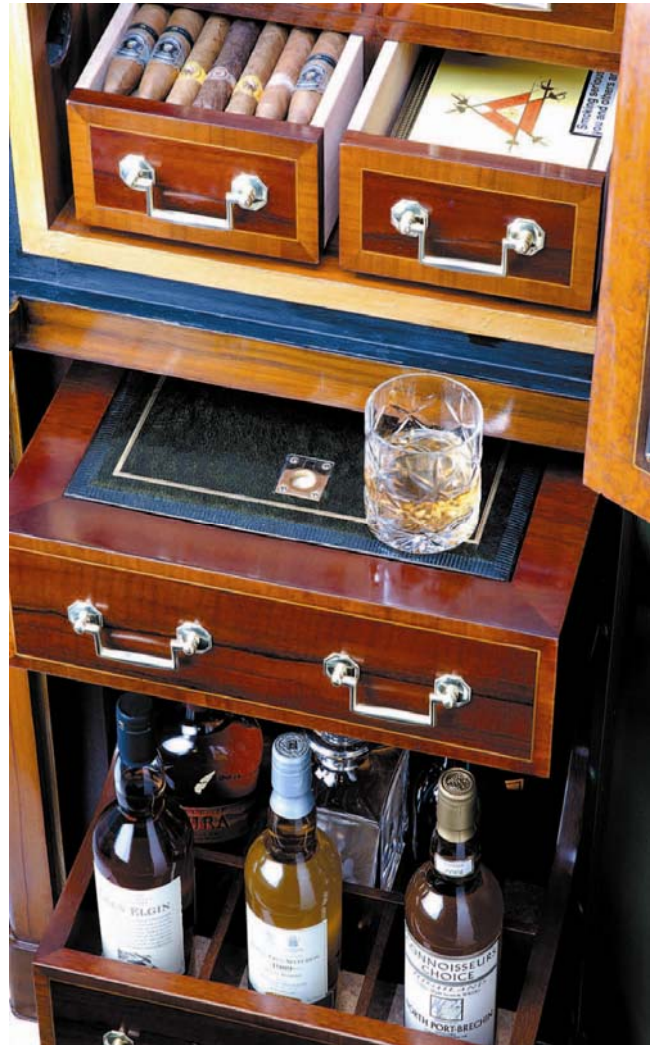
Hamburg developed as a cultural and commercial metropolis while the industrial revolution gathered pace. Manufacturing thrived, and with it grew the famous Julius Schuler Fabrik, renowned strongbox and lock makers. They used their ingenuity to create combination locking systems of the highest calibre. To locate one of these ancient wonders today is a find indeed!

Like others of its period, this impressive safe was transported to another city by the sea: Singapore, the beating heart of the exotic East. Here it took up residence in an emporium on the shores of the Telok Ayer River, the active artery into and out of which flowed all the prosperity of the mystic Orient.

The maker's name plate reads: Fabrik Julius Schuler, Hamburg & Ottensen but the key inscription is the word Geldschrank - literally Money Cabinet. In order to unlock the safe, you require two separate keys with two private combinations. This makes it not only theft-proof, but impenetrable to all but the rightful owners – an impassable bunker in which to store your chosen treasures.

The safe is adorned with a cast-iron crown of floral decoration flanked by twin trophies on either side mounted atop Corinthian columns. The newly-restored interior is designed to emulate the hand-painted trompe l'oeil finish of the exterior. Solid mahogany cigar drawers, edged with tulipwood and inlaid with fine box stringing are lined with cedar and fitted with special selected humidifiers. The upper part of the safe can be used to store cigars in their boxes and is also humidified, with a hygrometer fitted at the rear to regulate humidity.

The inside of the door is enhanced by a bevelled glass mirror etched with the word 'Cigars' though the



choice of wording and language can be yours. In the lower cabinet, there is a dedicated drawer in which to store smoking and cocktail accessories, the top of which is covered in antique green leather tooled in gold. The pull-out cocktail drawer boasts nine individual compartments lined with varnished cork to store spirits, wines and decanters. The brass framed mirror at the rear reflects the bottles and their contents. All the drawers and trays are fitted with solid brass Victorian-style handles.

To own the Julius Schuler Safe is to own a piece of Teutonic history. As they say nowadays: they don't make 'em like that anymore!

Dimensions: 63W X 162h X 60D **Weight:** 340Kgs