

## SYSTEM CABINETS STANDARD

Constructed from 1.5mm pressed and folded steel and secured with a choice of five locking options, these **System Cabinets Standard** provide the space to store and track up to 600 keys and include adjustable hook bars to accommodate different key lengths. Each model is finished in a robust powder coat paint finish (RAL 7035) and has a removable control index for out-of-hours peace of mind, colour-coded hook bars and tags to ensure quick identification, both of which are numbered.

## SYSTEM 250

- 1.5mm steel cabinet with flush closing rim to resist forced entry
- Adjustable colour coded and numbered hook bars allow the layout to be customised
- Ingenious key tabs are designed to hang so that the number is always visible
- Includes 7 security seals and loops to secure keys that require clear evidence of tampering or removal
- Durable Light Grey paint finish will suit most environments
- Supplied with security lock and 2 keys



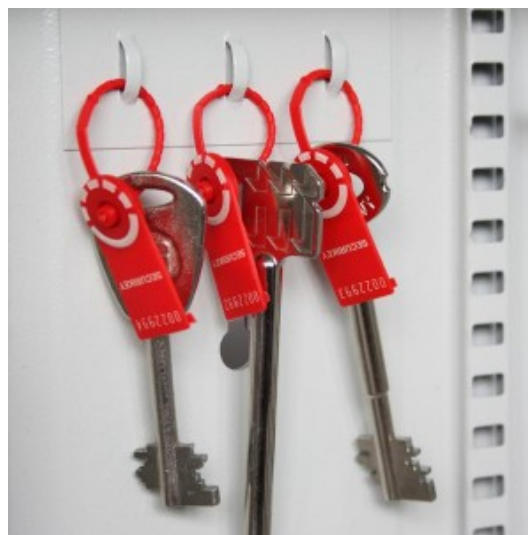
## ADDITIONAL INFORMATION

<b>Weight</b>	17.000 kg
<b>Dimensions</b>	550 (H) x 380 (W) x 205 (D) mm
<b>Standard</b>	Bronze
<b>Locking Options</b>	A – REVO B/BR, B – 3/4 Wheel Mechanical Combination, C – REVO A, D – Padlocking Cam Lock, F – CL1000, I – La Gard 39E, K – La Gard 66E
<b>Capacity</b>	250 keys

SYSTEM CABINETS FOR 250 KEYS IMAGES



System Cabinet Inner Leaf



Security Seals & Loops



System 250 CL1000 Electronic Cam Lock



System 250 Dial Combination Lock

SYSTEM CABINETS FOR 250 KEYS IMAGES



System 250 Electronic Lock REVO A

Your Securikey Stockist

Every effort has been made to ensure that the information in this brochure is correct. We have a policy of continually developing and improving our products and reserve the right to change specification without notice. By virtue of the Trades Description Act 1968 all measurements and weights must be considered approximate.



Generated 25/04/2016